

LANIKAI LABS



TOP SECRET



OPERATIONS MANUAL

Lanikai Labs - TunaUke

We here at **Lanikai Labs** have been working on a solution for the last 3 years for a problem that has plagued all ukuleles. Have you ever tuned up your ukulele and played one chord in tune then switch to another chord and it plays out of tune? The strings are stretched and the open strings are in tune, but for some reason that second chord plays out of tune... Well my friends that is what is called **poor intonation!**

There are many issues that cause poor intonation and **TunaUke™** Technology solves them all. With this technology we have achieved over a **90% improvement in intonation**. For the first time ever in the history of the instrument you can overcome all the obstacles and have a ukulele that plays open chords in tune all the way up the neck.

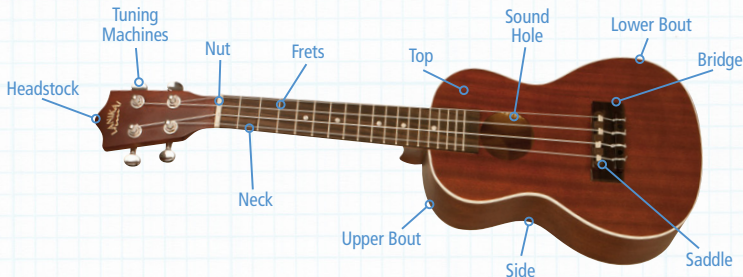
Your Ukulele includes:

- ✓ One set of tall saddles
- ✓ Handy Dandy instruction booklet!

In this manual you will learn how to intonate your instrument. Before that let's go over the parts of your new Ukulele and what notes you want to tune your ukulele to:

Parts of the ukulele

Get to know your new ukulele by familiarizing yourself with all of it's body parts!



Tuning Your ukulele

The easiest and most precise way to tune your ukulele is by using a **digital chromatic tuner**. This allows you to quickly tune your ukulele to the notes G, C, E, and A (from top to bottom strings). Some of our ukes come with a built in tuner! If yours does not, pick up a CO-UT Lanikai clip on uke tuner at lanikaiukes.com!



G C E A

Intonating Your Ukulele

1. Your instrument was sent out using factory placement. As you stretch out your strings the first time you will notice that the intonation will change and notes that may have played in tune do not anymore. This is normal. You need to completely stretch out your strings before proper intonation can be set. Aquila strings are notorious for stretching. You will need to retune numerous times before the strings stabilize completely.
2. Make sure that the string is in tune when played in **open position** (not placing your finger on the string on any fret).
3. Play this string on the 12th fret. If the note is in tune then it is intonated correctly and skip to step 6. If it is out of tune you will need to move the saddle either towards the soundhole (shortening the string) or towards the butt of the ukulele (elongating the string)
4. If the note played on the 12th fret is **flat** you need to **shorten the string**
 - Slide the string off to the side of the saddle. (fig a, pg 4)
 - Move the saddle towards the sound hole. (fig b, pg 4)
 - If you run out of throw and the ukulele is still flat you can remove the saddle and reverse it. (fig c, pg 4)
 - Place the string back on the saddle and return to step 2. (fig d, pg 4)
 - Repeat till in tune in the open position and on the 12th.

fig a



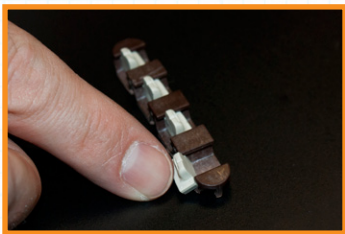
Slide the string off to the side of the saddle

fig b



Move the saddle towards the sound hole if flat and towards the butt if sharp

fig c



If you run out of throw and the ukulele is still flat you can remove the saddle and reverse it

fig d



Place the string back on the saddle and return to step 2

5. If the note played on the 12th fret is **sharp** you need to **lengthen the string**

- Slide the string off to the side of the saddle. (fig a)
- Move the saddle towards the butt of the instrument. (fig b)
- If you run out of throw and the ukulele is still flat you can remove the saddle and reverse it. (fig c)
- Place the string back on the saddle and return to step 2. (fig d)
- Repeat till in tune in the open position and on the 12th.

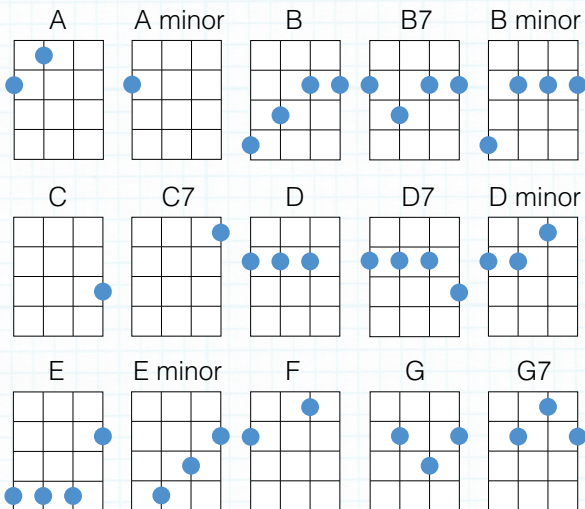
6. Repeat for all other strings

Helpful hints:

- If you find the saddles to be hard to move, remove them from the saddle housing and use a pencil to apply some graphite to the saddle's sides. This will lubricate the saddle and allow it to slide smoothly
- If the ukulele's action is too low replace the short saddles that came equipped from the factory with the replacement taller saddles.
- You should not need to use any tools to move your saddles, however if you do wish to use something be careful not to damage the saddle housing or the bridge. We have found that pushing the saddles using a pen cap can help.

Now you should be in tune!

Here are some easy **chords** and **patterns** to use in many different styles of music:



Patterns

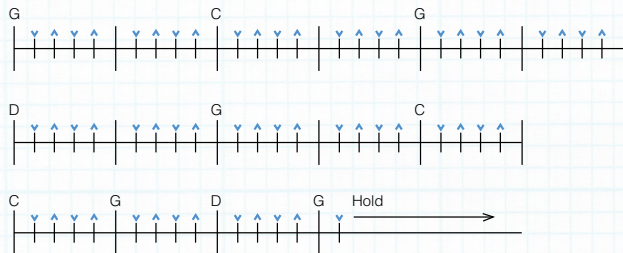
Strum Up



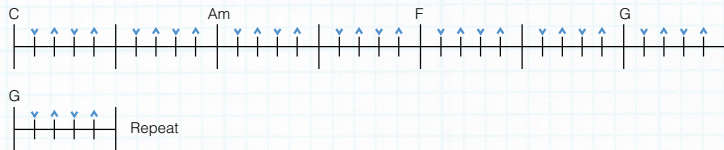
Strum Down



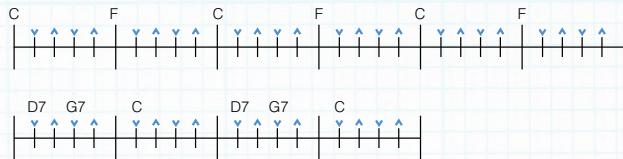
Rock & Country Grass Lick



Classic 57 Dancehall



Hawaiian Tune



New from Lanikai Labs:

UKESB



PLUG & PLAY compatible with:

- PC & Mac recording
- Select Android devices
- Garageband
- Ableton Live
- Ipad 1,2 and 3
- Skype
- Logic Pro
- Audacity

And much more!



The easiest way to record your uke!

For more information please visit www.lanikaiukes.com.

Happy Playing!





lanikaiukes.com